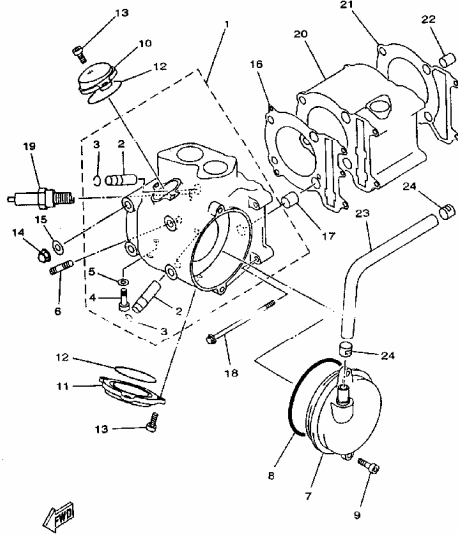
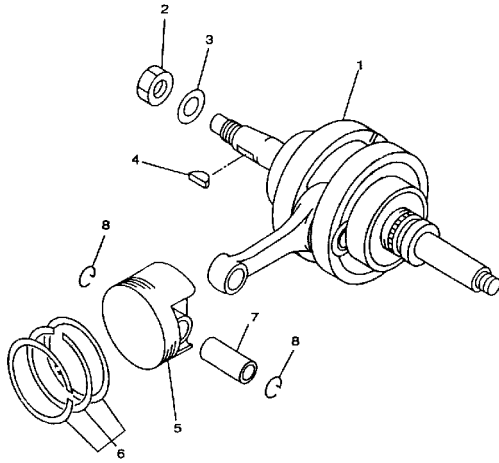


## CYLINDER



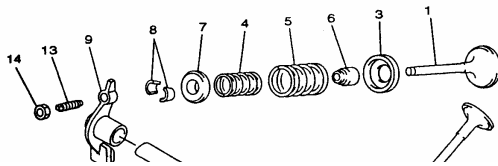
REF. No.	CODE	DESCRIPTION	Q'TY	REMARK
1	22401B	CYLINDER HEAD ASSY	1	
2	22402	GUIDE INTAKE VALVE	2	
3	10112	CIRCLIP 12	2	
4	10128	BOLT M6X12	1	
5	22405	GASKET 6	1	
6	10014	BOLT STUD M8X25	2	
7	22407	BREATHER ASSY	1	
8	22408	O-RING 95X3.3	1	
9	10008	BOLT SOCKET HEAD M6X20	2	
10	22410	VALVE COVER INTAKE SIDE	1	
11	22411	VALVE COVER EXHAUST SIDE	1	
12	22412	O-RING 57.5X2.3	2	
13	10008	BOLT SOCKET HEAD M6X20	5	
14	22414	NUT CROWN M8	4	
15	22415	WASHER PLATE 8	4	
16	22416B	GASKET CYLINDER HEAD1	1	
17	22417	PIN DOWEL 14X16	2	
18	22418	BOLT FLANGE M6X120	2	
19	22419	PLUG SPARK-NGK DR8EA	1	
20	22420B	CYLINDER	1	
21	22421	GASKET CYLINDER	1	
22	22422	PIN DOWEL 10X14	2	
23	22423	PIPE BREATHER1	1	
24	22424	CLIP 12MM	2	

**CRANKSHAFT COMP**



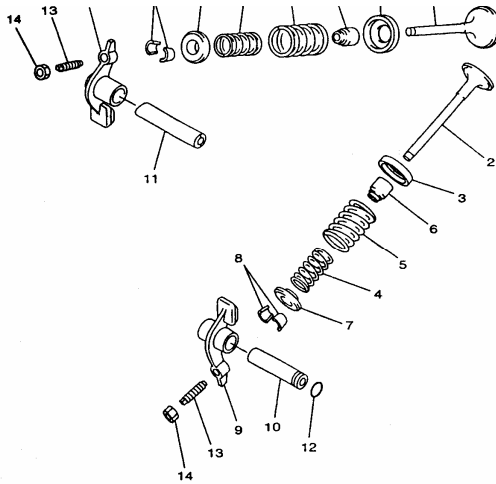
REF. No.	CODE	DESCRIPTION	Q'TY	REMARK
1	42701	CRANKSHAFT ASSY	1	
2	22502	NUT M16X1	1	
3	22503	WASHER PLATE 16	1	
4	22504	KEY WOODRUFF	1	
5	22505B	PISTON	1	
6	22506B	PISTON RING SET	1	
7	22507	PISTON PIN	1	
8	22508	CLIP	2	

**VALVE**



27

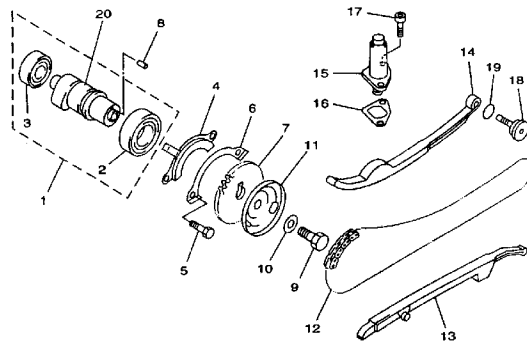
REF. No.	CODE	DESCRIPTION	Q'TY	REMARK
1	22601	INTAKE VALVE	1	
2	22602	EXHAUST VALVE	1	
3	22603	SEAT SPRING VALVE	2	
4	22604	SPRING VALVE INNER	2	
5	22605	SPRING VALVE OUTER	2	
6	22606	SEAL VALVE STEM	2	
7	22607	RETAINER SPRING VALVE	2	



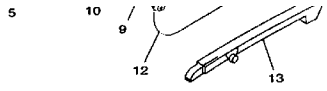
8	22608	COTTER VALVE	4
9	22609	ROCKER ARM VALVE	2
10	22610	EXHAUST ROCKER SHAFT	1
11	22611	INTAKE ROCKER SHAFT	1
12	22612	O-RING 9X2	1
13	22613	ADJUSTING SCREW VALVE	2
14	22614	NUT M6X0.75	2

**28**

**CAMSHAFT CHAIN**

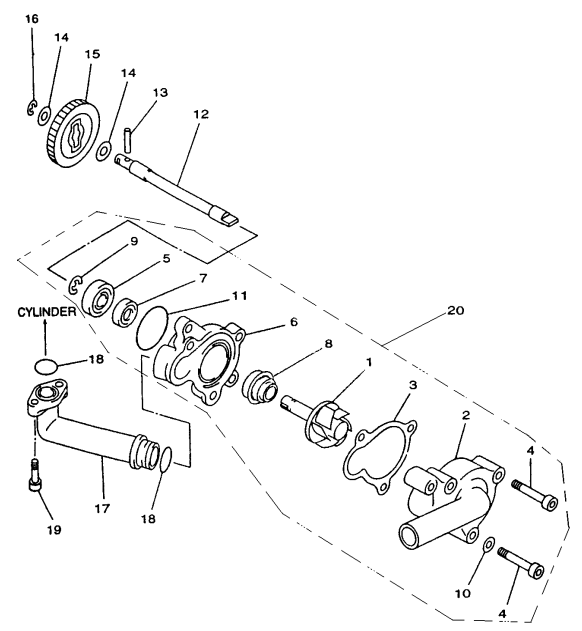


REF. No.	CODE	DESCRIPTION	Q'TY	REMARK
1	22701	CAMSHAFT ASSY1	1	
2	10012	BEARING	1	
3	10013	BEARING-B6202Z	1	
4	22704	PLATE	1	
5	10128	BOLT M6X12	2	
6	22706	LOCK WASHER	1	
7	22707	CAM CHAIN SPROCKET	1	
8	10024	DOWEL PIN B4X10	1	
9	10025	BOLT M10X1.25X25	1	
10	22710	WASHER PLATE 10	1	
11	22711	BREATHER PLATE2	1	
12	22712	CHAIN	1	
13	22713	GUIDE STOPPER1	1	
14	22714	GUIDE STOPPER2	1	
15	22715	CAM CHAIN TENSIONER ASSY	1	



16	22716	GASKET TENSIONER CASE	1
17	10036	SOCKET HEAD BOLT M6X14	2
18	22718	CHAIN TENSIONER PIVOT BOLT	1
19	22719	O-RING 14.5X1.8	1
20	22720	CAMSHAFT	1

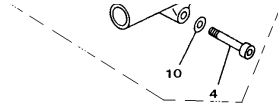
**WATER PUMP**



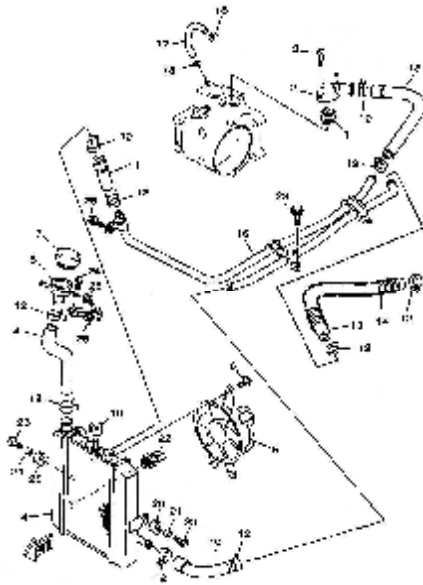
**29**

REF. No.	CODE	DESCRIPTION	Q'TY	REMARK
1	22801	IMPELLER SHAFT ASSY	1	
2	22802	HOUSING COVER	1	
3	22803	GASKET HOUSING COVER2	1	
4	10041	SOCKET HEAD BOLT M6X35	3	
5	10043	BEARING	1	
6	22806	WATER PUMP HOUSING	1	
7	22807	OIL SEAL 10X21X5	1	
8	22808	MECHANICAL SEAL	1	
9	10044	CIRCLIP 10	1	
10	22810	GASKET 6	1	
11	10049	O-RING 33.5X2.65	1	
12	22812	SHAFT	1	
13	10070	DOWEL PIN C3X22	1	
14	22814	WASHER PLATE 8	2	
15	22815	IMPELLER SHAFT GEAR	1	
16	10072	CIRCLIP 8	1	
17	22817	JOINT	1	
18	10082	O-RING 15.5X2.5	2	
19	10083	SOCKET HEAD BOLT M6X15	2	
20	22820	WATER PUMP ASSY	1	

19



**RADIATOR HOSE**



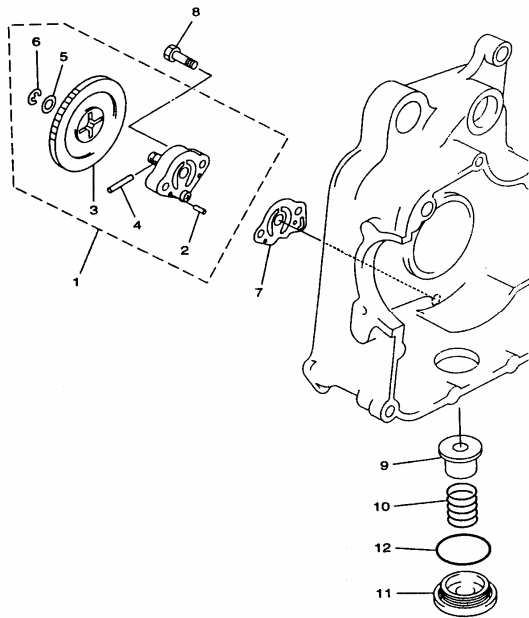
**30**

REF. No.	CODE	DESCRIPTION	Q'TY	REMARK
1	22901	THERMOSTAT	1	
2	22902	THERMOSTAT COVER	1	
3	10085	SOCKET HEAD BOLT M6X25	2	
4	43104	RADIATOR ASSY	1	
5	43105	BLOWER ASSY	1	
6	10087	FLANGE BOLT M6X9	3	
7	22907	RADIATOR CAP	1	
8	22908	SUPT FILLER NECK	1	
9	43109	PIPE 1	1	
10	43110	PIPE 2	1	
11	43111	PIPE 3	1	
12	22913	CLIP	10	
13	43113	PIPE 4	1	
14	43114	SPRING CIMPRESSION	1	
15	43115	PIPE 5	1	
16	43116	PIPE 6	1	
17	43117	H0SE2	1	
18	22914	CLIP	4	
19	43119	GROMMET 1	1	
20	22917	GROMMET 2	2	
21	22918	COLLAR	2	
22	22919	THERMOSTAT SWITCH ASSY	1	
23	10239	BOLT M6X16	4	
24	10294	BOLT M6X5X12	1	
25	10299	BOLT M6X8	1	
26	43126	BRACKET	1	

**31**

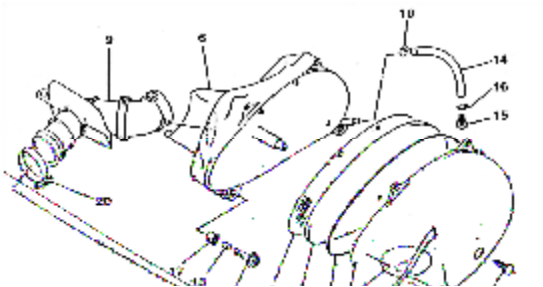
**OIL PUMP**

REF. No.	CODE	DESCRIPTION	Q'TY	REMARK
1	23101	OIL PUMP ASSY	1	
2	10096	DOWEL PIN 3X12	2	



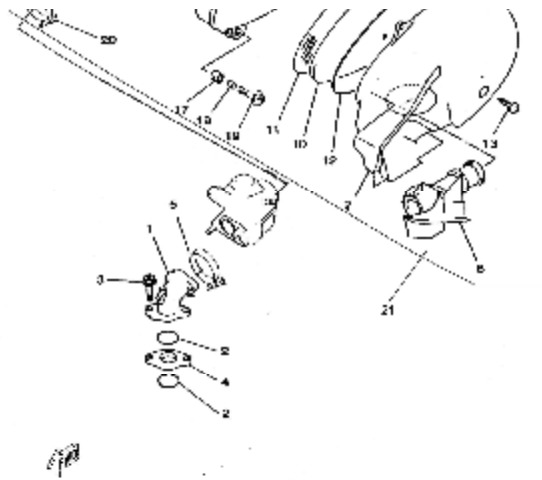
3	23103	GEAR PUMP DRIVEN	1
4	10097	DOWEL PIN C3X22	1
5	22814	WASHER PLATE	1
6	10130	CIRCLIP	1
7	23107	GASKET	1
8	10098	SCREW M6X25	2
9	23109	OIL STRAINER	1
10	23110	COMPRESSION SPRING	1
11	23111	DRAIN PLUG	1
12	23112	O-RING 36X3.5	1

### AIR CLEANER



### 32

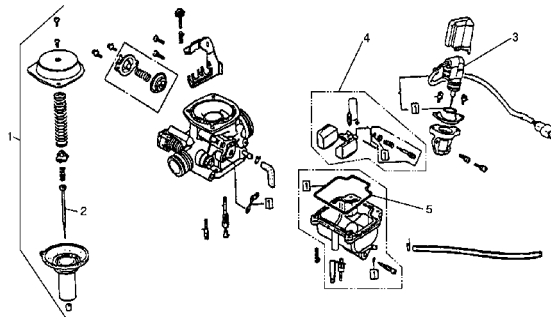
REF. No.	CODE	DESCRIPTION	Q'TY	REMARK
1	23201	JOINT CARBURETOR 1	1	
2	23202	O-RING 35X2	2	
3	10085	BOLT M6X25	2	
4	23204	JOINT	1	
5	23205	HOSE CLAMP B	1	
6	43306	CASE.AIR CLEANER 1	1	
7	43307	CAP.CLEANER CASE 1	1	
8	43308	DUCT	1	
9	43309	JOINT.AIR CLEANER	1	
10	43310	ELEMENT.AIR CLEANER	1	



11	43311	PLATE ELEMENT	1
12	43312	SEAL	1
13	10173	SCREW.TAAPING	5
14	43314	HOSE	1
15	43315	PLUG	1
16	43321	CLIP	2
17	43316	GROMMET	2
18	43317	COLLAR	2
19	10170	BOLT M6X25	2
20	43319	CLAMP. HOSE A	1
21	43320	AIR CLEANER	1

33

**CARBURETOR**

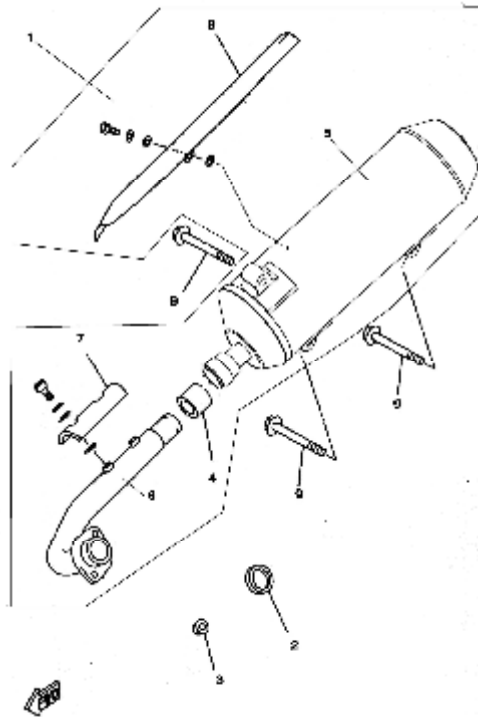


REF. No.	CODE	DESCRIPTION	Q'TY	REMARK
1	23301	CARBURETOR ASSY	1	
2	23302	JET NEEDLE SET	1	
3	23303	AUTO CHOKE ASSEM	1	
4	23304	FLOAT ASSY	1	
5	23305	BOWL GASKET	1	

16



**EXHAUST**

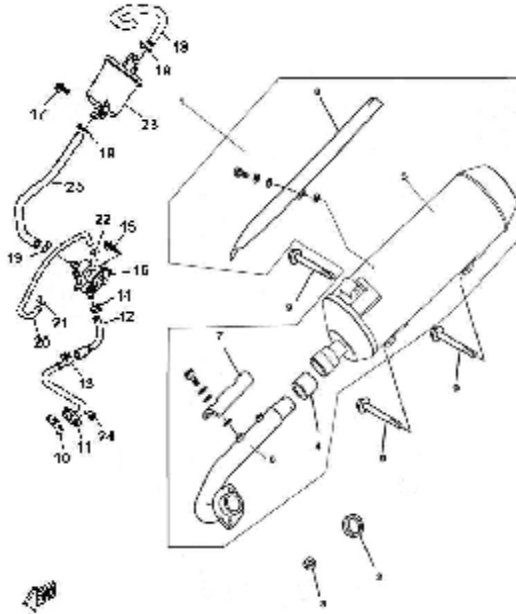


**34**

REF. No.	CODE	DESCRIPTION	Q'TY	REMARK
1	43501	MUFFLER	1	
2	10079	NUT M8	2	
3	23403	GASKET 1 EXHAUST PIPE	1	
4	23411	GASKET 2 EXHAUST PIPE	1	
5	43505	EXHAUST	1	
6	43506	EXHAUST PIPE	1	
7	43507	SMALL PROTECTIVE PANEL	1	
8	43508	PROTECTIVE PANEL	1	
9	10158	BOLT M10X1.25X50	3	



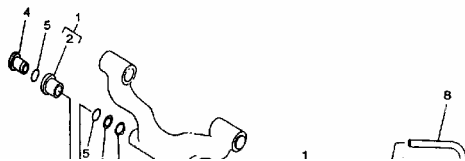
**EXHAUST (FOR EUROPE)**



35

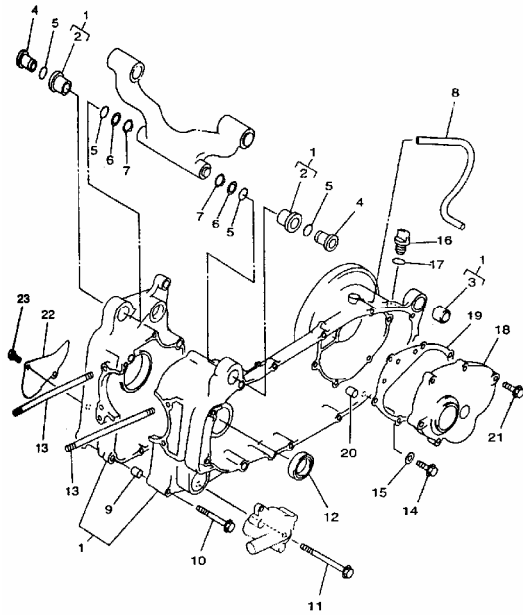
REF. No.	CODE	DESCRIPTION	Q'TY	REMARK
1	43501a	MUFFLER	1	
2	10079	NUT M8	2	
3	23403	GASKET 1 EXHAUST PIPE	1	
4	23411	GASKET 2 EXHAUST PIPE	1	
5	43505b	EXHAUST	1	
6	43506	EXHAUST PIPE	1	
7	43507	SMALL PROTECTIVE PANEL	1	
8	43508	PROTECTIVE PANEL	1	
9	10158	BOLT M10X1.25X50	3	
10	43510	WASHER	1	
11	43511	HOSE	1	
12	43512	HOSE C	1	
13	43513	CLIP 16	1	
14	43514	CLIP 13	1	
15	10182	BOLT M6X20	2	
16	43516	VALVE	1	
17	10140	BOLT M6X12	2	
18	43518	HOSE A	1	
19	43519	HOSE CLAMP 16	3	
20	43520	PIPE	1	
21	43521	CLIP 9	1	
22	43522	CLIP 7.6	1	
23	43523	FILTER	1	
24	10004	BOLT M6	2	
25	43525	HOSE	2	

**CRANKCASE**



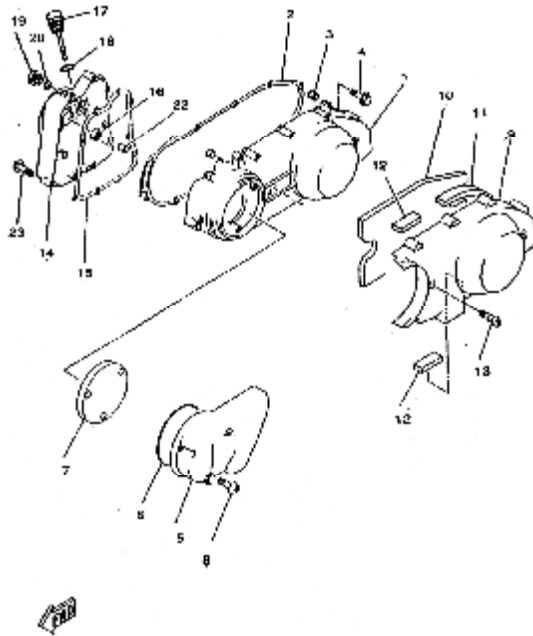
35A

REF. No.	CODE	DESCRIPTION	Q'TY	REMARK
1	23501	CRANKCASE ASSY	1	
2	23502	HOLDER	2	
3	43603	BUSH REAR SHOCK ABSORBER	1	
4	23503	COLLAR	2	
5	23504	O-RING	4	



6	23505	WASHER PLATE 16	2
7	10121	CIRCLIP 16	2
8	43608	HOSE	1
9	22422	DOWEL PIN 10X14	4
10	23508	FLANGE BOLT M6X70	4
11	23509	FLANGE BOLT M6X100	5
12	23510	OIL SEAL 30X45X5	1
13	23511	STUD BOLT M8X245	4
14	43614	BOLT FLANGE	1
15	43615	WASHER PLATE	1
16	43616	PLUG OIL	1
17	43617	O-RING	1
18	43618	COVER CRANKCASE2	1
19	43619	GASKET CRANKCASE COVER2	1
20	22422	PIN DOWEL 10X14	2
21	10169	BOLT FLANGE	6
22	23512	COVER CRANKCASE2	1
23	10171	BOLT SOCKET HEAD	2

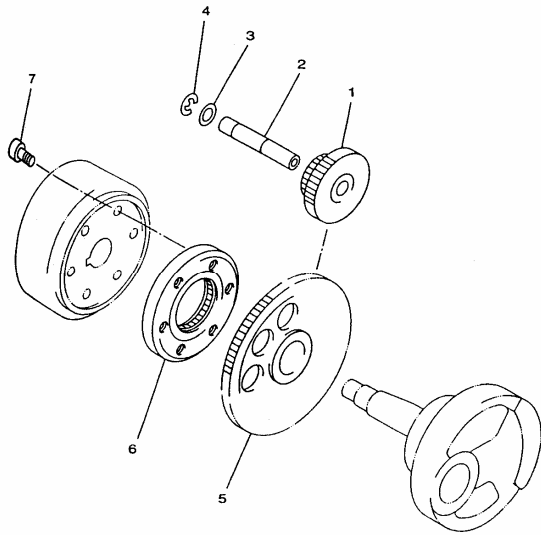
**LEFT COVER**



REF. No.	CODE	DESCRIPTION	Q'TY	REMARK
1	43601	COVER CRANKCASE LEFT	1	
2	43602	FLANGE BOLT M6X52	1	
3	22422	DOWEL PIN 10X14	4	
4	23615	BOLT DOWEL	20	
5	43605	DUCT AIR	1	
6	43606	SEAQL AIR DUCT	1	
7	43607	ELEMENT 1	1	
8	10172	SCREW PAN HEAD	3	
9	43609	COVER CRANKCASE3	1	
10	43610	DAMPER ENGINE MOUNT1	1	
11	43611	DAMPER ENGINE MOUNT2	1	
12	43612	DAMPER3	2	
13	43613	BOLT1	2	
14	23616	CAP COVER	1	
	23616A	CAP COVER	1	
15	23617	GASKET CARBURETOR COVER	1	
16	23609	OIL SEAL	1	
17	23611	OIL PLUG	1	
18	10122	O-RING 18X2.65	1	
19	23613	OIL PLUG	1	
20	10123	O-RING 14X2.65	1	

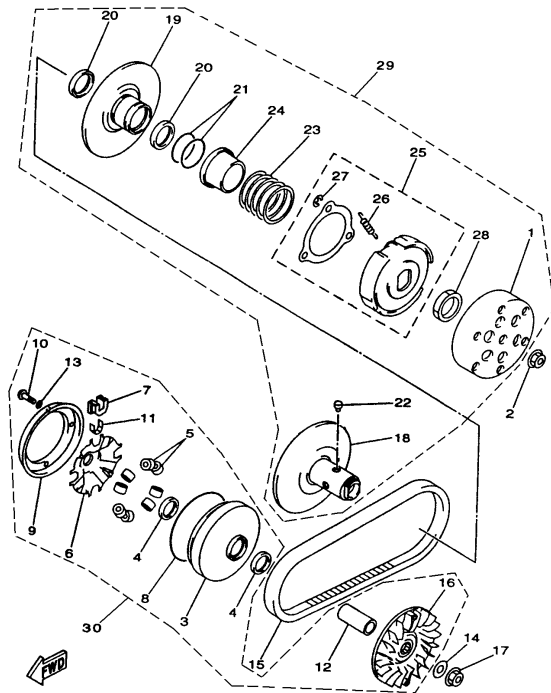
\*FOR HIGH-POWER GENERATOR

### STARTER



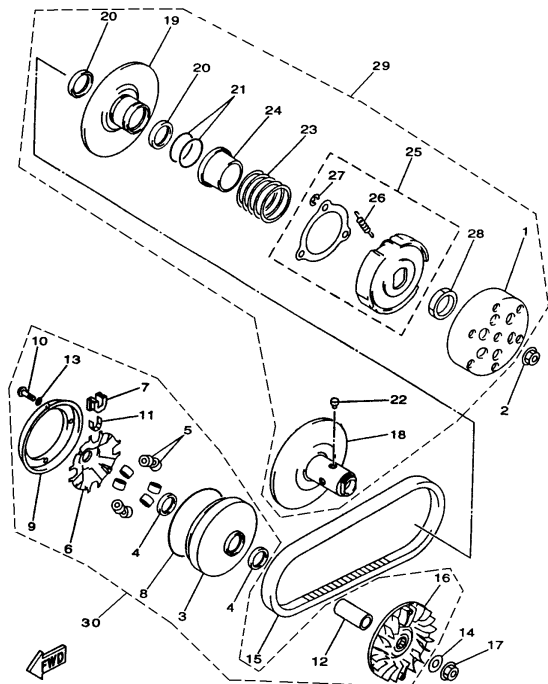
REF. No.	CODE	DESCRIPTION	Q'TY	REMARK
1	23701	GEAR IDLER	1	
2	23702	SHAFT	1	
3	23703	WASHER 12	1	
4	10129	CIRCLIP 12	1	
5	23705	GEAR REDUCTION	1	
6	23706	STARTER CLUTCH	1	
7	10131	SOCKET HEAD BOLT M8X16	3	

## CLUTCH



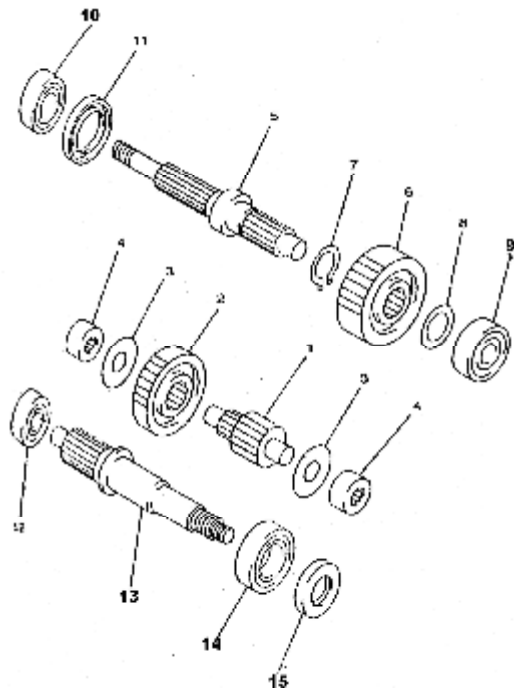
REF. No.	CODE	DESCRIPTION	Q'TY	REMARK
1	23801	CLUTCH HOUSING COMP.	1	
2	23802	NUT M14X1	1	
3	23803	PRIMARY SLIDING SHEAVE COMP	1	
4	23804	OIL SEAL	2	
5	23805	WEIGHT	8	
6	23806	CAM	1	
7	23807	SLIDER	4	
8	23808	O-RING 118X2.5	1	
9	23809	STOPPER	1	
10	10132	PAN HEAD SCREW M4X12	4	
11	23811	SPACER 1	4	
12	23812	COLLAR	1	
13	23813	WASHER PLATE 4	4	
14	23814	WASHER PLATE 14	1	
15	23815	V-BELT	1	
16	23816	SHEAVE PRIMARY FIXED	1	
17	23802	NUT M14X1	1	
18	23818	SECONDARY FIXED SHEAVE COMP.	1	
19	23819	SECONDARY SLIDING SHEAVE	1	
20	23820	OIL SEAL	2	
21	23821	O-RING 45X1.8	2	
22	23822	PIN GUIDE	4	

**CLUTCH**



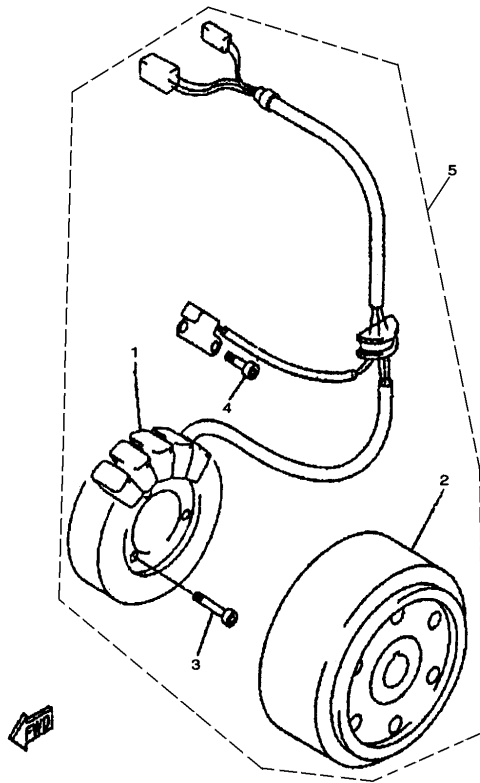
REF. No.	CODE	DESCRIPTION	Q'TY	REMARK
23	23923	COMPRESSION SPRING	1	
24	23924	SEAT SECONDARY SPRING	1	
25	23925	CLUTCH CARRIER ASSY	1	
26	23926	CLUTCH WEIGHT SPRING 1	3	
27	10133	CIRCLIP 8	3	
28	23928	NUT M36X1.5	1	
29	23929	DRIVEN ASSY COMPLETE	1	
30	23930	DRIVE ASSY COMPLETE	1	

**TRANSMISSION**



REF. No.	CODE	DESCRIPTION	Q'TY	REMARK
1	44101	AXLE MAIN	1	
2	44102	GEAR PRIMARY DRIVEN	1	
3	44103	WASHER 15	2	
4	44104	BEARING CYLIDRICAL	2	
5	44105	AXLE DRIVE	1	
6	44106	GEAR 1ST WHEEL	1	
7	10164	CIRCLIP	1	
8	44108	WASHER PLATE	1	
9	10165	BEARING 6303/P5	1	
10	44110	BEARING 62/22RS	1	
11	44111	OIL SEAL	1	
12	10144	BEARING 302/P5	1	
13	44113	GEAR PRIMARY DRIVEN	1	
14	10061	BEARING 6025C3	1	
15	44115	OIL SEAL	1	

## GENERATOR



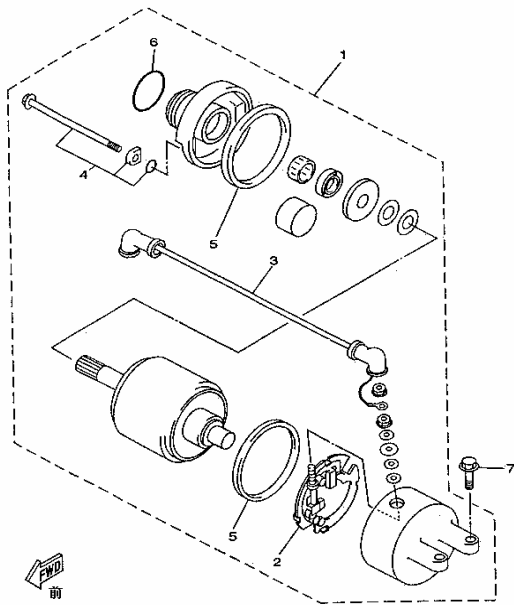
REF. No.	CODE	DESCRIPTION	Q'TY	REMARK
1	24001	STATOR ASSY (WHITE WIRE CONNECTORS)	1	
	24001A	HIGH-POWER GENERATOR STATOR ASSY (BLACK WIRE CONNECTORS)	1	*
2	24002	ROTOR ASSY (GREEN SHELL)	1	
	24002A	HIGH-POWER GENERATOR ROTOR ASSY (WHITE SHELL)	1	*
3	10134	SOCKET HEAD BOLT M5X25	3	
	10085	SOCKET HEAD BOLT M6X25	3	
4	10135	SOCKET HEAD BOLT M5X12	2	
5	24005	GENERATOR ASSY	1	
	24005A	HIGH-POWER GENERATOR ASSY	1	*
6	24007	PICK UP COIL	1	

Note! To prevent damage and assure proper performance follow these guidelines.  
 The high power generator stator and rotor must be used in combination for proper performance.  
 The high power generator requires the use of right crankedcase cover PN23616A.

\*FOR 23616A CAP COVER

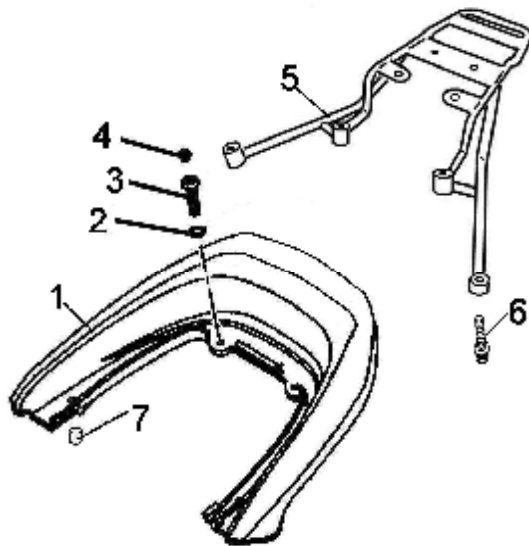


### STARTING MOTOR



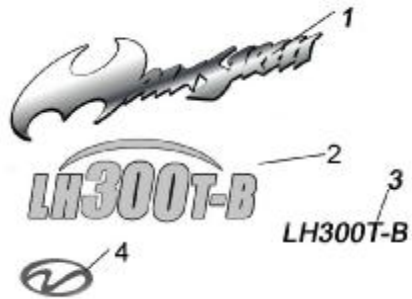
REF. No.	CODE	DESCRIPTION	Q'TY	REMARK
1	24101	STARTING MOTOR ASSY	1	
2	24102	BRUSH HOLD ASSY	1	
3	24103	CORD,STARTER MOTOR	1	
4	24104	BOLT	2	
5	24105	GASKET	2	
6	24106	O-RING 24.5X3	1	
7	24107	FLANGE BOLT M6X25	2	

ACCESSORIES



REF. No.	CODE	DESCRIPTION	Q'TY	REMARK
1	40828A	ARMGUARD	1	
2	10168	WASHER 8	4	
3	40929	BOLT M8X25	6	
4	40930	PLUG	8	
5	40945	REAR FRAME	1	
6	10211	BOLT M8X25	4	

**BODY COVERS STICKERS**



REF. No.	CODE	DESCRIPTION	Q'TY	REMARK
1	44603	BODY COVERS STICKER 1	2	
2	44602a	BODY COVERS STICKER 2	2	
3	44603a	BODY COVERS STICKER 3	2	
4	44605	BODY COVERS STICKER 4	1	