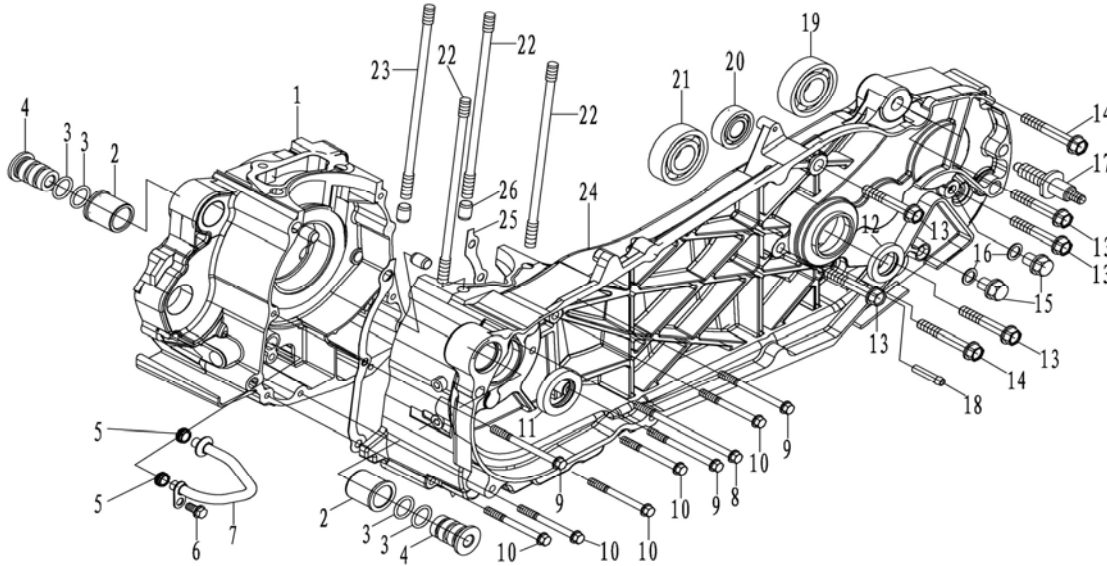


NOTES: V5 Engine Model:172MM

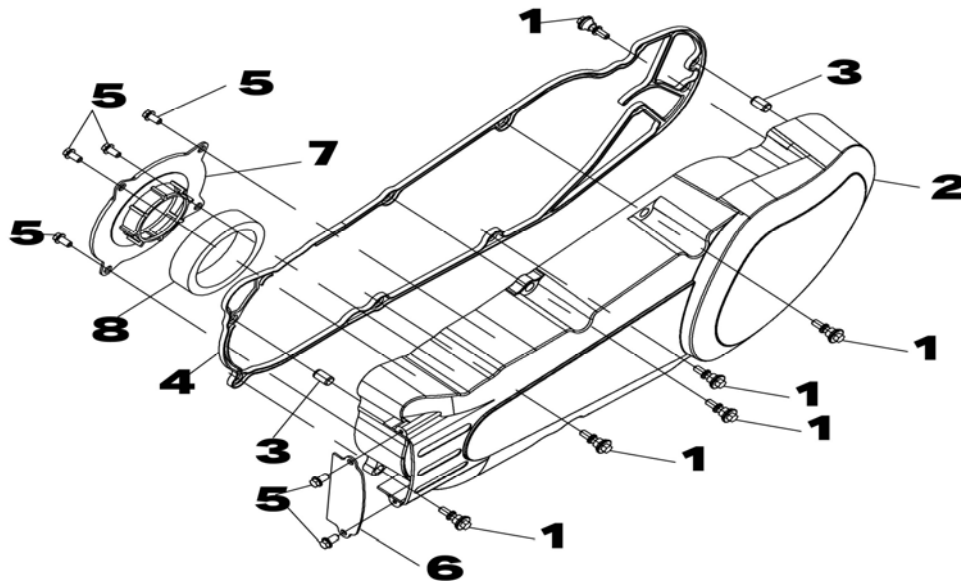
F1 CRANKCASE ASSY.



D#	PART#	DESCRIPTION	Q'TY
1	172MM-A-011200	RIGHT CRANKCASE COMP.	1
2	152MI-011010	OUTER BUSH, ENGINE SUSPENSION	2
3	152MI-011008	O-RING, 15.8x2.4	4
4	152MI-011009	INNER BUSH, ENGINE SUSPENSION	2
5	172MM-011002	SEAL , INTERNAL OIL PIPE	2
6	152MM-021019	BOLT, M6x12	1
7	172MM-011400	INTERNAL OIL PIPE SET	1
8	152MI-A-011006	BOLT, M6x105	1
9	1P52MI-011018	BOLT, M6x70	3
10	172MM-011017	BOLT, M6x60	5
11	172MM-011001	OIL SEAL, 28x40x8	1
12	GB/T 9877.1-1988- FB22x35x5	OIL SEAL	1
13	1P39MB-012006	BOLT, M8x50	5
14	1P52MI-A-011007	BOLT, M8x55	2
15	152MI-060011	DRAIN BOLT M10x1.25	2

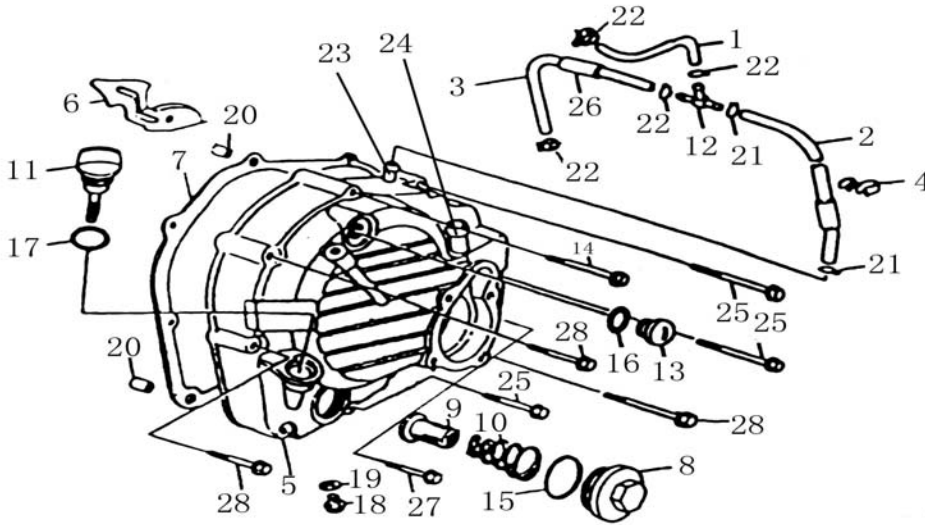
16	152MI-060010	WASHER 10	2
17	172MM-A-011006	REAR SUSPENSION SHAFT	1
18	1P39MB-022306	JOINT 6x30	1
19	NTN : 6304	ROLLER BEARING	1
20	GB/T 276-1994-6202	BEARING	1
21	172MM-060002	ROLLER BEARING 22x50x14	1
22	172MM-011004	DOUBLE END BOLT A, CYLINDER	3
23	172MM-011005	DOUBLE END BOLT B, CYLINDER	1
24	172MM-A-011100	LEFT CRANKCASE COMP.	1
25	172MM-011003	GASKET, CRANKCASE	1
26	152MI-021005	DOWEL PIN, $\phi 10 \times 14$	4

F2 LEFT SIDE COVER ASSY.



D#	PART#	DESCRIPTION (EN)	Q'TY
1	1P52MI-A-012200	BOLT COMP,LEFT SIDE COVER	6
2	172MM-A-012001	LEFT SIDE COVER	1
3	152MI-011007	DOWEL PIN, $\phi 10 \times 16$	2
4	172MM-A-012002	GASKET, LEFT SIDE COVER	1
5	152MI-021019	BOLT, M6x12	6
6	172MM-A-012005	AIR INLET COVER	1
7	172MM-A-012003	FILTER ELEMENT BRACKET	1
8	1P52MI-A-012104	FILTER ELEMENT	1

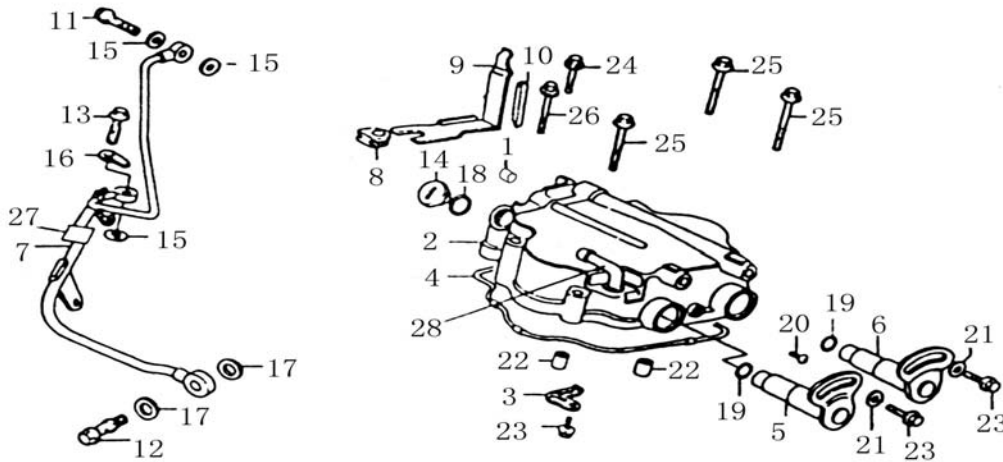
F3 RIGHT SIDE COVER ASSY.



D#	PART#	DESCRIPTION	Q'TY
1	172MM-013013	BREATHER HOSE	1
2	172MM-013100	HOSE COMP., RIGHT SIDE COVER	1
3	172MM-013015	HOSE, AIR CLEANER	1
4	172MM-013016	HOSE CLIP	1
5	172MM-013002	RIGHT SIDE COVER	1
6	172MM-013008	RETAINING PLATE	1
7	172MM-013012	GASKET, RIGHT SIDE COVER	1
8	172MM-013007	COVER, STRAINER	1
9	152MI-013100	FILTER ELEMENT COMP.	1
10	172MM-013006	SPRING	1
11	172MM-013001	OIL DIP ROD	1
12	172MM-013019	T JOINT, BREATHER	1
13	152MI-021008	UPPER INSPECTION PLUG	1
14	172MM-013031	BOLT, M6x80	1
15	172MM-013028	O-RING, 30x3.55	1
16	152MI-021009	SEAL, UPPER INSPECTION COVER	1
17	172MM-013030	O-RING, 18x3.55	1
18	172MM-013005	DRAIN BOLT, M12x1.5	1
19	152MI-021014	WASHER, 12	1

20	152MI-080008	DOWEL PIN, $\phi 8 \times 14$	2
21	QC/T621-1999-A10	WIRE CLIP	2
22	QC/T621-1999-A12	WIRE CLIP	4
23	172MM-013010	JOINT, BREATHER	1
24	172MM-013009	JOINT, WATER OUTLET	1
25	152MI-013009	BOLT, M6x40	3
26	172MM-013026	HOSE SLEEVE	1
27	152MI-071007	BOLT, M6x28	1
28	1P52MI-011018	BOLT, M6x70	3

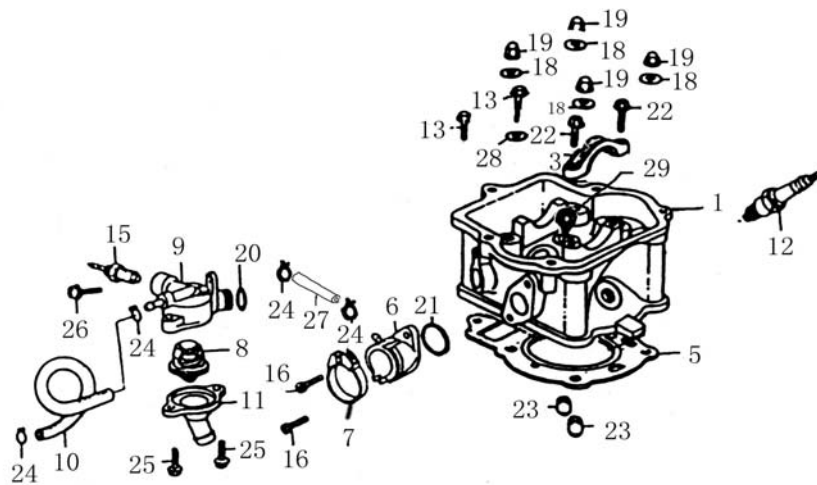
F4 CYLINDER HEAD COVER ASSY.



D#	PART#	DESCRIPTION	Q'TY
1	172MM-021008	PLUG	1
2	172MM-021001	COVER, CYLINDER HEAD	1
3	172MM-021006	BAFFLE	1
4	152MI-021011	GASKET, CYLINDER HEAD COVER	1
5	172MM-021100	ROCKER SHAFT, INTAKE	1
6	172MM-021200	ROCKER SHAFT, EXHAUST	1
7	172MM-021400	EXTERNAL OIL PIPE	1
8	152MI-021001	RUBBER RING, OIL PIPE	1
9	172MM-021431	HOLDER, OIL PIPE	1
10	152MI-021003	RUBBER CUSHION	1
11	152MI-021004	BOLT, M8x25	1

12	152MI-021015	BOLT, M12x1.25	1
13	152MI-021013	BOLT C, M8x25	1
14	152MI-021008	UPPER INSPECTION COVER	1
15	152MI-021016	WASHER 8	3
16	152MI-021012	WASHER	3
17	152MI-021014	WASHER 12	2
18	152MI-021009	SEAL , UPPER INSPECTION COVER	1
19	152MI-021010	SEAL, ROCKER SHAFT	2
20	GB/T818-2000-M5X16-D.CR	CROSS SCREW	1
21	GB/T848-85-6-D.CR	WASHER	2
22	152MI-021005	DOWEL PIN, φ10x14	2
23	152MI-021019	BOLT, M6x12	3
24	152MI-021017	BOLT, M6x25	1
25	152MI-013010	BOLT, M6x50	3
26	152MI-021018	BOLT, M6x55	1
27	172MM-021404	CUSHION SLEEVE	1
28	172MM-021002	BREATHER JOINT	1

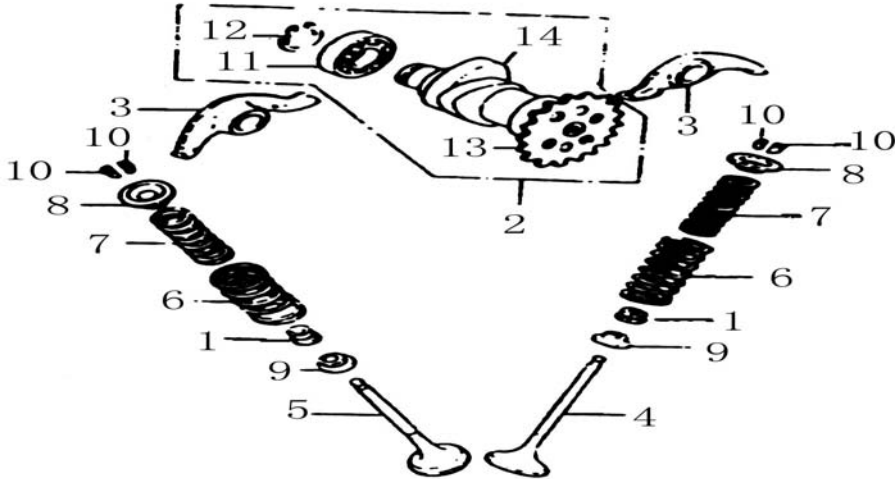
F5 CYLINDER HEAD ASSY.



D#	PART#	DESCRIPTION	Q'TY
1	172MM-022100	CYLINDER HEAD COMP.	1
2	172MM-022700	FLANGE , MUFFLER	1
3	152MI-022014	COVER, CAMSHAFT BEARING	1

4	172MM-022008	NUT, MUFFLER	2
5	172MM-022010	GASKET, CYLINDER HEAD	1
6	172MM-022900	CARBURETOR JOINT	1
7	172MM-022500	CLAMP SET, INTAKE	1
8	152MI-022810	THERMOSTAT COMP.	1
9	152MI-022803	UPPER CASE, THERMOSTAT	1
10	152MI-022021	COOLING HOSE I, CARBURETOR	1
11	172MM-022601	LOWER CASE, THERMOSTAT	1
12	172MM-022400	SPARK PLUG COMP.	1
13	152MI-021017	BOLT, M6x25	2
14	172MM-022800	GASKET, EXHAUST PORT	1
15	152MI-022600	TRANSDUCER, WATER TEMPERATURE	1
16	GB/T6191-1986- M6X18-D.CR	INNER HEX HEAD SCREW	2
17	172MM-022007	STUD, MUFFLER	2
18	152MI-022012	WASHER 8	4
19	152MI-022013	CAP NUT M8	4
20	152MI-022804	O-RING, 14.8x1.9	1
21	172MM-022009	O-RING, 31x2	1
22	152MI-022020	BOLT, M6x22	2
23	152MI-021005	DOWEL PIN, ϕ 10x14	2
24	QC /T621-1999-A6.5	WIRE CLIP	2
25	152MI-090005	BOLT, M6x16	2
26	152MI-023008	BOLT, M6x18	1
27	152MI-022017	BREATHER HOSE , CARBURETER	1
28	GB/T848-85-6-D Zn	WASHER	1
29	152MI-023303	PLUGM12x1	1
30	1P39MB-022017	T JOINT , VACUUM	1
31	1P39MB-022019	VACUUM TUBE 77	1

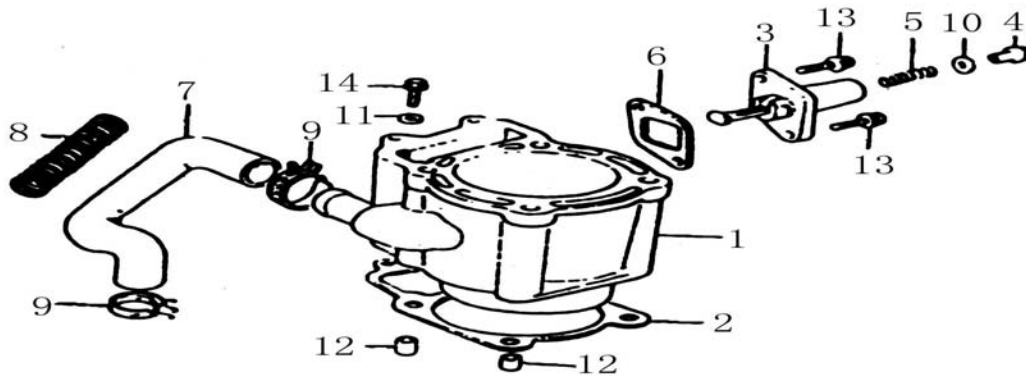
F6 VALVE SYSTEM



D#	PART#	DESCRIPTION	Q'TY
1	152MI-022500	SEAL SET, VALVE STEM	2
2	172MM-022300	CAM COMP.	1
3	152MI-021007	ROCKER ARM	2
4	172MM-022001	VALVE, INTAKE	1
5	172MM-022005	VALVE, EXHAUST	1
6	172MM-022002	OUTER SPRING, VALVE	2
7	172MM-022003	INNER SPRING, VALVE	2
8	152MI-022005	RETAINER, VALVE SPRING	2
9	152MI-022001	SEAT, VALVE SPRING	2
10	152MI-022006	VALVE CLIP	4
11	NTN: 16002	BEARING	2
12	GB894.1-86-15	CIRCLIP	1
13	172MM-022310	SPROCKET	1
14	172MM-022301	CAMSHAFT	1

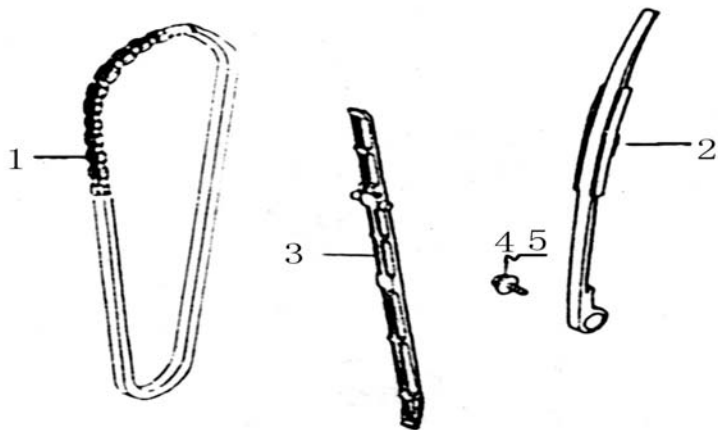
0

F7 CYLINDER BODY ASSY.



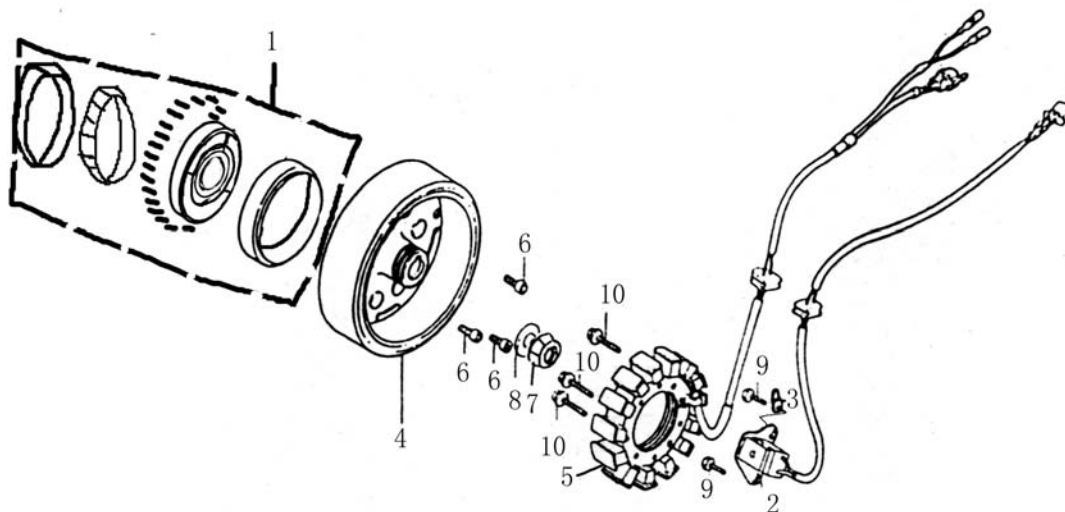
D#	PART#	DESCRIPTION	Q'TY
1	172MM-023100	CYLINDER BODY COMP.	1
2	172MM-023002	GASKET, CYLINDER	1
3	152MI-023300	TENSIONER COMP.	1
4	152MI-023307	BOLT, SPRING HOLDER	1
5	152MI-023306	SPRING	1
6	152MI-023004	GASKET, TENSIONER	1
7	172MM-023007	HOSE, WATER INLET	1
8	172MM-023009	GUARD SHIELD, WATER PIPE	1
9	QC/T621-1999-B24	CLAMP	2
10	152MI-023005	WASHER 8.5	1
11	GB/T848-85-6-D.Zn	WASHER	1
12	152MI-021005	DOWEL PIN, $\phi 10 \times 4$	2
13	152MI-023008	BOLT, M6x18	2
14	152MI-080013	BOLT, M6x22	1

F8 TIMING CHAIN



D#	PART#	DESCRIPTION	Q'TY
1	172MM-022200	TIMING CHAIN	1
2	172MM-023200	TENSIONER	1
3	172MM-023001	CHAIN GUIDE	1
4	GB96-85-6-D.ZN	GASKET	1
5	GB/T15781-2000-M6X12-D.ZN	HEX BOLT	1

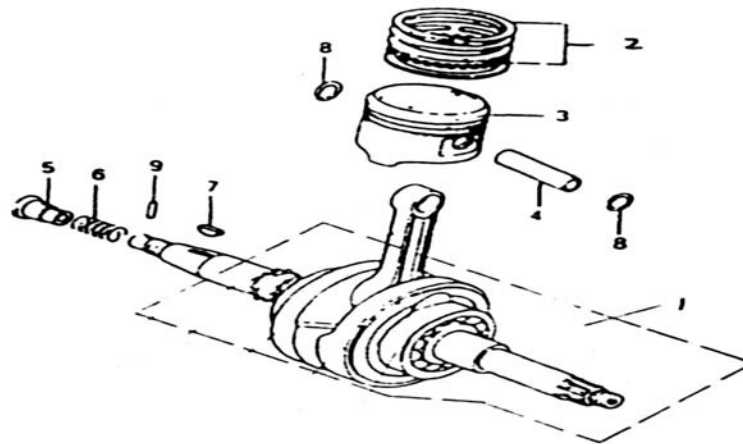
F9 MAGNETO ASSY.



D#	PART#	DESCRIPTION	Q'TY
1	172MM-094000	OVERRIDING CLUTCH COMP.	1
	172MM-030000	MAGNETO ASSY.	1
2	172MM-033000	COIL, PICK UP	1

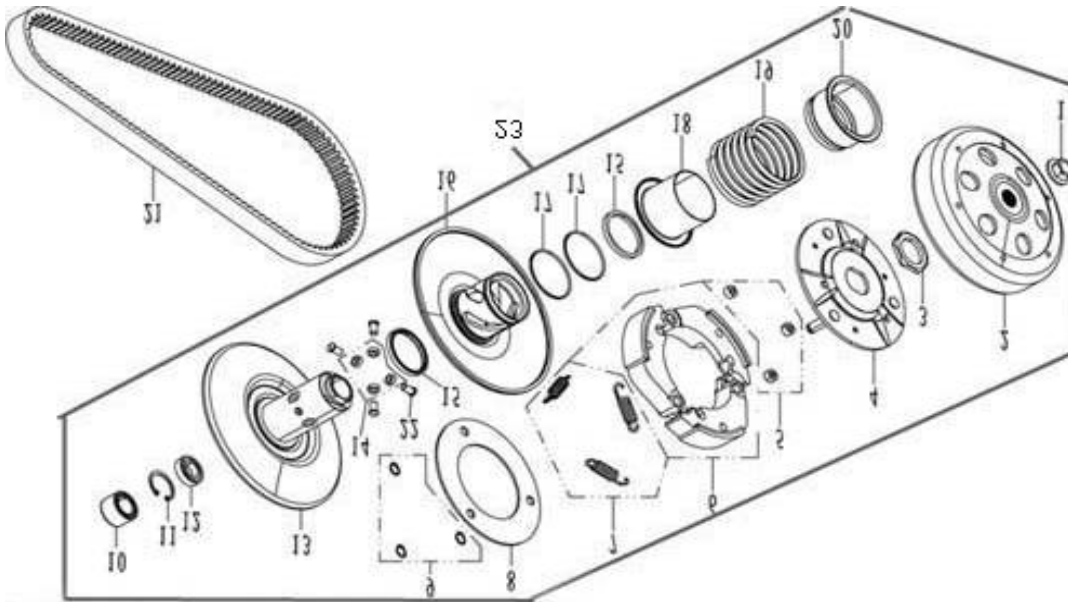
3	172MM-013008	HOLDER, WIRE	1
4	172MM-031000	ROTOR COMP.	1
5	172MM-032000	COIL ASSEMBLY, STARTER	1
6	GB/T70.1-2000-M8x18	INNER HEX SCREW	3
7	172MM-040001	NUT, M16x1	1
8	172MM-040002	WASHER, 16.3x30x2	1
9	152MI-030002	BOLT, M5x16	2
10	152MI-060012	BOLT, M6x30	3

F10 CRANKSHAFT ASSY.& PISTON



D#	PART#	DESCRIPTION	Q'TY
1	172MM-041000	CRANKSHAFT COMP.	1
2	172MM-040008	PISTON RING, 1st	1
	172MM-040009	PISTON RING, 2nd	1
	172MM-042000	OIL RING SET	1
3	172MM-040005	PISTON	1
4	172MM-040007	PISTON PIN	1
5	152MI-040011	JOINT, OIL CHANNEL	1
6	152MI-040010	JOINT SPRING, OIL CHANNEL	1
7	152MI-040006	WOODRUFF KEY	1
8	172MM-040006	CIRCLIP, PISTON PIN	2
9	GB/T119-2000-2x14	PIN	1

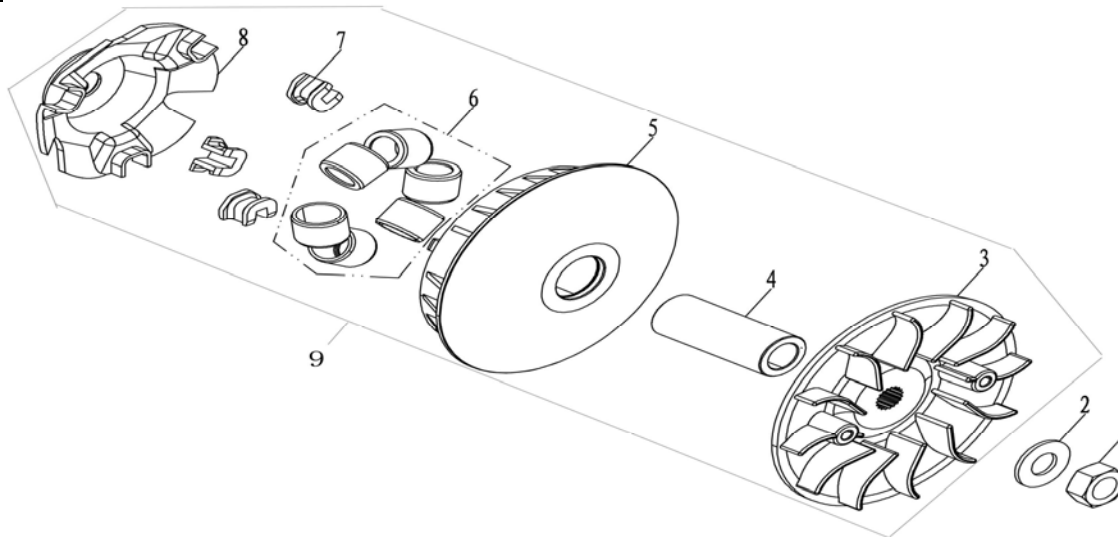
F11 CLUTCH ASSY.



D#	PART#	DESCRIPTION	Q'TY
1	172MM-052008	NUT, M12x1.25	1
2	172MM-A-052500	CLUTCH HOUSING	1
3	172MM-052005	RETAINING NUT, M30x1	1
4	172MM-A-052400	DRIVE PLATE	1
5	172MM-A-052200	CUSHION BLOCK	3
6	172MM-A-052600	CLUTCH CARRIER	3
7	172MM-A-052006	RETURN SPRING, CLUTCH	3
8	172MM-A-052003	END PLATE, CLUTCH	1
9	GB/T896-1986-9	SPLIT WASHER	3
10	172MM-052310	NEEDLE BEARING 22x29x18	1
11	GB/T893.1-1986-28	CIRCLIP	1
12	GB/T278-1989-1060902	BEARING	1
13	172MM-A-052300	SECONDARY FIXED SHEAVE	1
14	172MM-A-052001	GUIDE ROLLER	4
15	172MM-A-052104	OIL SEAL, SECONDARY FIXED SHEAVE	2
16	172MM-A-052100	SECONDARY SLIDING SHEAVE	1
17	GB3452.1-1992-46.2x1.8	O-RING	2
18	172MM-A-052007	SEAL CARTRIDGE	1
19	172MM-A-052004	CLUTCH SPRING	1
20	172MM-A-052009	SLEEVE	1

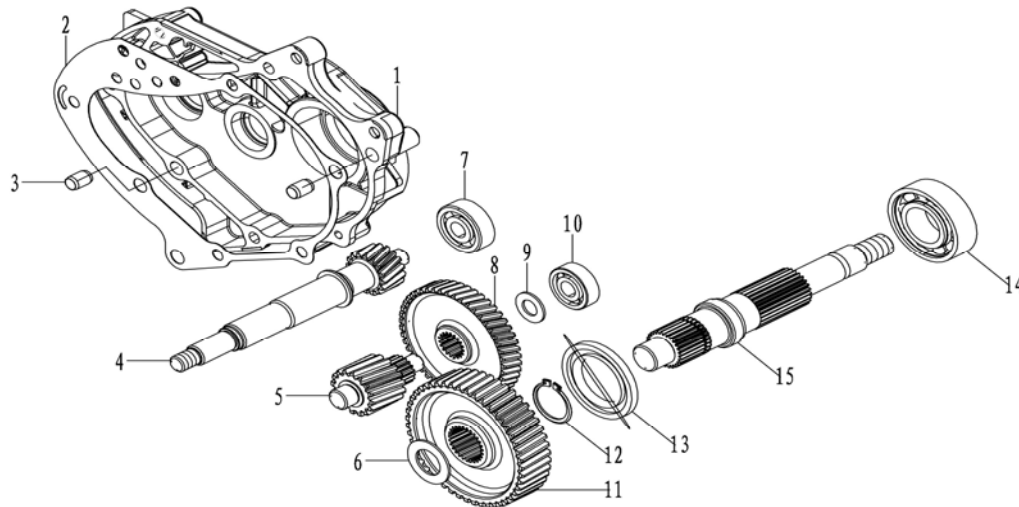
21	172MM-A-053000	BELT	1
22	172MM-A-052002	GUIDE PIN	4
23	172MM-A-052000	CLUTCH ASSY	1

F12 GEARSHIFT ASSY.



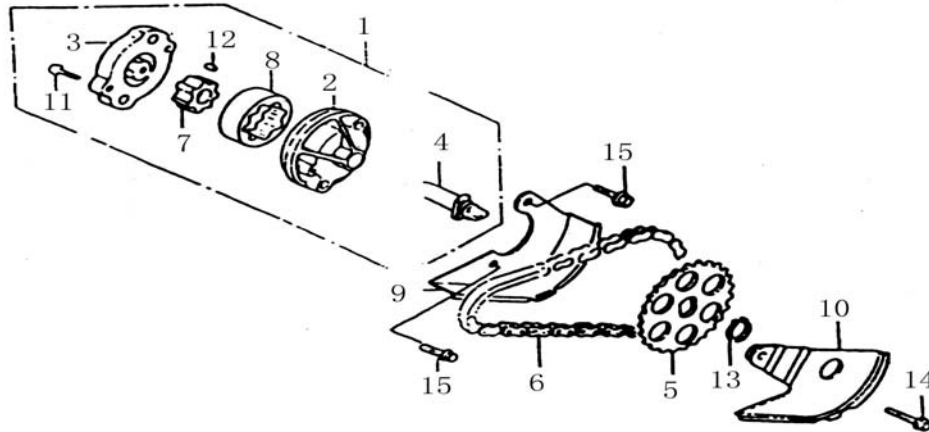
D#	PART#	DESCRIPTION	Q'TY
1	172MM-051007	NUT, M14x1.5	1
2	172MM-051006	WASHER, 14.5x30x2	1
3	172MM-051005	PIRMARY FIXED SHEAVE	1
4	172MM-051003	COLLAR, PRIMARY FIXED SHEAVE	1
5	172MM-051100	PRIMARY SLIDING SHEAVE	1
6	172MM-051200	WEIGHTS	6
7	172MM-051004	SLIDER	3
8	172MM-A-051002	THRUST DISC	1
9	172MM-A-051000	GEARSHIFT ASSY.	1

F13 TRANSMISSION ASSY.



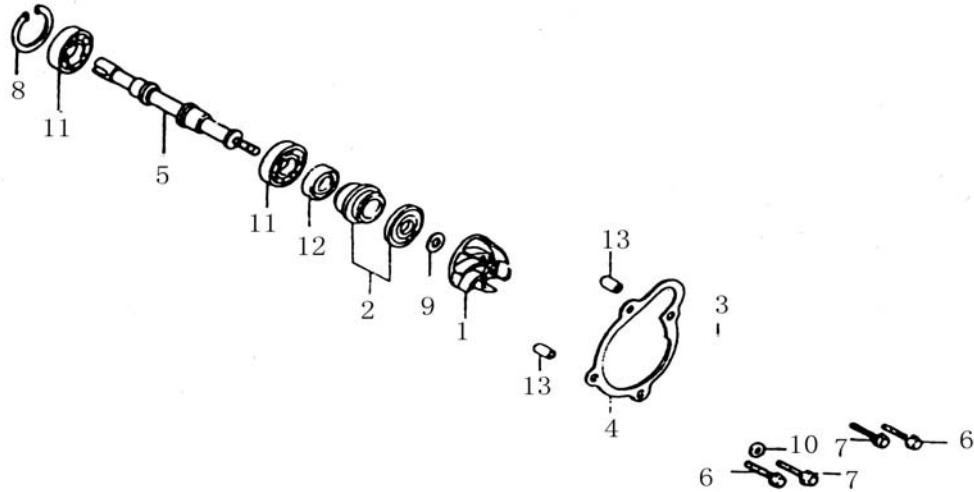
D#	PART#	DESCRIPTION	Q'TY
1	172MM-A-060002	GEARBOX	1
2	172MM-A-060001	GASKET , GEARBOX	1
3	152MI-021005	DOWEL PIN, $\phi 10 \times 14$	2
4	172MM-A-060003 (1)	DRIVE SHAFT	1
5	172MM-A-060004	COUNTER SHAFT COMP.	1
6	172MM-A-060007	ADJUSTING WASHER 20	1
7	GB/T 276-1994-6301	BEARING	1
8	172MM-A-060005	GEAR, COUNTER SHAFT	1
9	1P52MI-A-060004	ADJUSTING WASHER 12	1
10	GB/T 276-1994-6201	BEARING	1
11	172MM-A-060006	FINAL GEAR	1
12	GB/T 894.1-1986-28	RETAINER	1
13	172MM-A-061000	OIL SEAL, 35 \times 58 \times 5	1
14	GB/T 276-1994-62/28 2RS	BEARING	1
15	172MM-A-060008	FINAL SHAFT	1

F14 OIL PUMP ASSY.



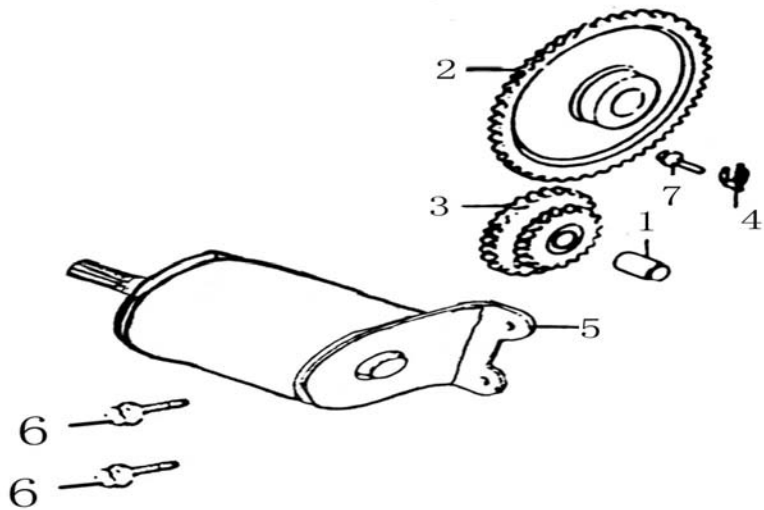
D#	PART#	DESCRIPTION	Q'TY
1	152MI-071000	OIL PUMP COMP.	1
2	152MI-071002	OIL PUMP BODY	1
3	152MI-071003	COVER PLATE, OIL PUMP	1
4	152MI-071001	SHAFT, OIL PUMP	1
5	152MI-070001	SPROCKET, OIL PUMP	1
6	152MI-073000	CHAIN, OIL PUMP	1
7	152MI-071004	INNER ROTOR, OIL PUMP	1
8	152MI-071005	OUTER ROTOR, OIL PUMP	1
9	152MI-070002	SEPERATING PLATE COMP. A	1
10	152MI-072000	SEPERATING PLATE COMP. B	1
11	GB878-85-M3x12	SCREW	1
12	152MI-071006	DOWEL PIN, 4x6.5	1
13	GB894.1-86-10	CIRCLIP	1
14	152MI-071019	BOLT, M6x12	1
15	152MI-070003	BOLT, M6x28	2

F15 WATER PUMP ASSY



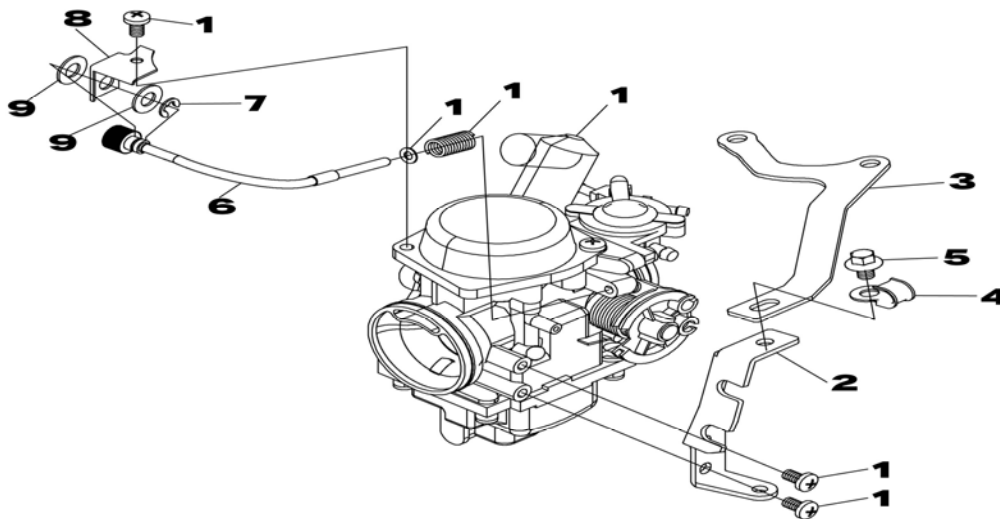
D#	PART#	DESCRIPTION	Q'TY
		WATER PUMP ASSY.	1
1	172MM-080004	IMPELLER, WATER PUMP	1
2	152MI-081000	WATER SEAL COMP.	1
3	172MM-A-080003	COVER, WATER PUMP	1
4	172MM-080002	GASKET, WATER PUMP COVER	1
5	172MM-080001	SHAFT, WATER PUMP	1
6	152MI-013009	BOLT M6x40	2
7	152MI-021017	BOLT M6x25	2
8	GB/T893.1-86-19	CIRCLIP	1
9	152MI-080007	WASHER 7.5x13x1.2	1
10	152MI-080011	WASHER 6x12x1	1
11	NTN: 6800	BEARING	2
12	172MM-080005	OIL SEAL 10x20x5	1
13	152MM-080008	DOWEL PIN, $\phi 8 \times 14$	2

F16 ELECTRICAL STARTING ASSY.



D#	PART#	DESCRIPTION	Q'TY
1	172MM-090001	SHAFT, DUAL GEAR	1
2	172MM-092000	DRIVEN GEAR COMP.	1
3	172MM-091000	DUAL GEAR	1
4	172MM-090007	HOLDER	1
5	172MM-093000	STARTING MOTOR COMP.	1
6	152MI-080013	BOLT, M6x22	2
7	172MM-090008	BOLT, M6x14	1

F17 CARBURETOR ASSY.



D#	PART#	DESCRIPTION	Q'TY
1	172MM-A-100200	CARBURETOR	1

2	172MM-A-100100	CABLE HOLDER	1
3	172MM-A-100001	CARBURETOR HOLDER	1
4	172MM-A-100005	EXHAUST PIPE CLIP	1
5	GB/T5787-1986- M6x10	BOLT, M6x10	1
6	172MM-A-100300	IDLING ADJUSTING FLEXIBLE SHAFT COMP	1
7	GB/T896-1986-6	RETAINER 6	1
8	172MM-A-100002	IDLING CALBE BRACKET	1
9	172MM-A-100003	WASHER	2